

HOTDOG Datalogger for Temperature and Humidity



Continuous Recording
Laboratories, Production,
Storage and Transportation

Picture:
HOTDOG DT1
with InPos Bracket and
HOTDOG DH1
with Simple Mounting
Bracket

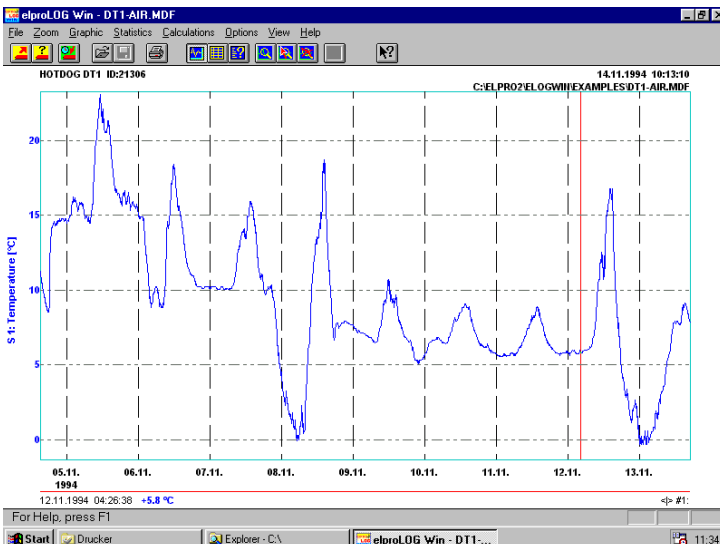
Documentation of storage and transportation climate for foodstuff and pharmaceutical products.

HOTDOG dataloggers are the easiest way to prove the cooling chains:

- Climatic Conditions,
- EG and FDA Regulations and
- HACCP - Definitions

Configuration List:

Temperature only:	HOTDOG DT1	2201	required once only:
Temperature and Humidity:	HOTDOG DH1	2204	PC Interface & PC Software 2302
Simple Mounting Bracket:		2816	
InPos Bracket with Installation Material:		2802	Optional: Devices with EX-Certificate



Since 1988
Quality Datalogger
from the leading
Swiss Company ELPRO

Quality Dataloggers Series HOTDOG for climate conditions recording

For temperature and humidity

Time range programmable between 8 hours and 500 days (Interval from 2 seconds).

Loop or Start-Stop memory mode with 16000 data points.

InPosition: module detects when it is in the InPos bracket.

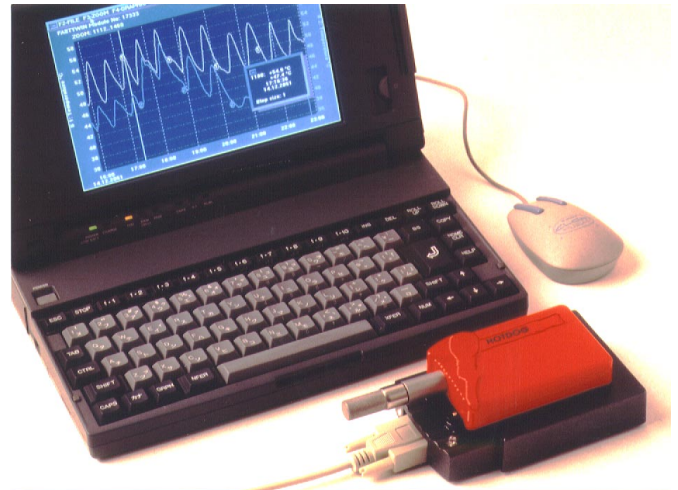
Fast, optical data transfer through the housing.

Robust, washable plastic housing suitable for the food industry.

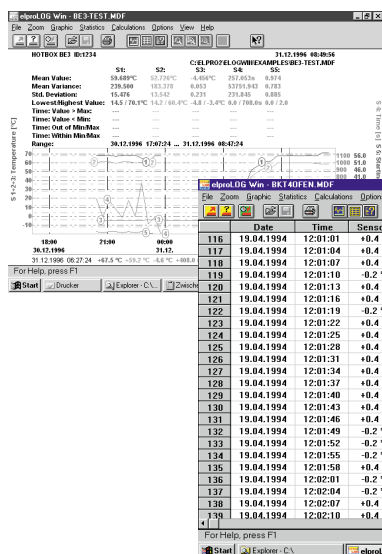
Battery lifetime approx. 5 years. Batteries and housing replaceable by our service department.

To **evaluate** a datalogger, it is placed onto the interface. The data is transmitted by infrared light through the housing bottom to the PC. (comparable to the remote controller of a TV set)

For more information please ask for our detailed data sheets and price list.



elproLOG WIN PC Evaluation Software



New Software Features:

- Supports all Windows printers
- Export of picture -> Word processing
- Export of data -> File or Excel
- Overlay of multiple loggers

for our Dataloggers
HOTDOG, ECOLOG, HOTBOX
as well for all **HAMSTER** modules
-> Simple Operation
-> Advanced design

elproLOG WIN
for Win3.1, W95, Win NT
for the Year 2000 and more
included in PC Interface
package

Korean Distributor
Emobile-Tech

Tel : 02) 529-5549 / Fax : 02)2606-1722

Home page : www.emobile-tech.com

E-mail : sam@emobile-tech.com

