



www.elpro.com

Your Datalogger Specialists

measure, store, alarm, document

Qualified systems

+ Software

+ Accessories

+ Service



Made in Switzerland
for over 15 years

Datalogger

ECOLOG

quality dataloggers



ECOLOG TH1
Temperature and humidity

Part No. 2423

The ECOLOG family

ECOLOG dataloggers are the ideal units for documentation of temperature and air humidity. Programmable alarm functions make them suitable for a widespread range of applications.

- Temperature (NTC, PT100) + relative air humidity
- Self-contained logger
- One-year memory capacity (64,000 measured values)
- 2 to 4 channels, programmable alarms
- Large display with autoscroll
- Multifunctional key pad
- Fast read-out to PC and printer



ECOLOG TP2
2x PT100 temperature -200°..550°C



ECOLOG TH2
Temperature and humidity, external probe



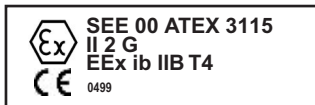
ECOLOG TP4-L
4x PT100 temperature -200°..550°C



ECOLOG TH1-M
Temperature and humidity, white housing



ECOLOG
with EEx approval

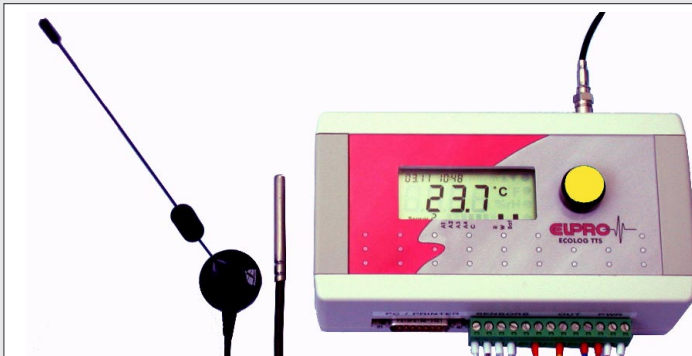


All ECOLOG dataloggers (except TTS)
also with approval for EEX zone 1

Type	Part No.
TN2	2420-EX
TN3-P	2420-PEX
TN4	2421-EX
TN4-L	2422-EX
TP2	2425-2TEX
TP4-L	2425-EX
TH1	2423-EX
TH2	2426-EX

Accessories for EEX zone 1:

Type	Part No.
Mounting bracket	2804-C-EX 2805-C-EX 2801-C-EX
Flasher lamp (mount only outside EEX zone 1)	2312



ECOLOG TTS datalogger with GSM-adaptor Part No. 2440
SET Ecolog TTS, datalogger with GSM-adaptor Part No. 2440-SET
consisting of: ECOLOG TTS, temperature probe NTC 3090-L15, supply cable, GSM-antenna

ECOLOG TTS

The datalogger with GSM connection. In addition to the one-year memory capacity for measured values, it is possible to make inquiries about measured temperatures via mobile phone or to send alarms to a GSM system (alarm center, e-mail, e-fax or mobile phone).

- Datalogger with SMS communication
- Alarms and measured values via SMS to mobile phone
- Automatic e-mail and e-fax
- Large display with autoscroll
- Fast read-out to PC and printer



ECOLOG

with all accessories

The brilliant datalogger

It is compact and robust with a large display developed specially for dataloggers.

A self-contained unit, it will record measured climatic data reliably for days, weeks, months or years. If required, you can read out the saved values to the display, a protocol printer or an office PC at any time.

If you need to transport perishable goods in a truck or if you are required to handle delicate chemicals in a laboratory, the ECOLOG datalogger is your reliable partner for a wide diversity of possible applications.

The various models are optimally suited to different uses. Each type is optimized for special applications and for specific measurement ranges.

The excellent cost-performance ratio justifies the success of ECOLOG dataloggers.

The modular design permits subsequent unit extensions with matching accessories for almost all customer applications.



ECOLOG TN4-L Part No. 2422
4x NTC temperature with Lemo connector
-50°..140°C



ECOLOG TN4 Part No. 2421
4x NTC temperature -50°..140°C



ECOLOG TN3-P Part No. 2420-P
3x NTC temperature -50°..140°C,
int. -35°..55°C



ECOLOG TN2 Part No. 2420
2x NTC temperature -50°..140°C,
int. -35°..55°C

Alarms



Flasher lamp; xenon red Part No. 2311-B
Flasher lamp with siren Part No. 2311-C



Remote alarm receiver Part No. 2340-R
Remote alarm sender Part No. 2340-T



Auto telephone dial unit Part No. 2341-A

Protocol printer



Printer Seiko 414 Part No. 2319

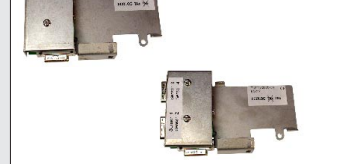
Brackets



Mounting sheet Part No. 2804-A
Fixation sheet, lockable Part No. 2804-E
Bracket with clamp for DB15 Part No. 2804-B



Bracket for TNx with terminals Part No. 2804-C
Bracket for TPx with terminals Part No. 2801-C

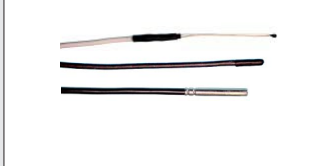


Bracket for TNx with RS232 Part No. 2804-CR
Bracket for THx with RS232 Part No. 2805-CR



Fixation sheet with A5 pocket Part No. 2804-D
Housing IP65 Part No. 2350-x

Probes



All temperature probes, see page 5

T / rH Probes



Plug on sensor: humidity and temperature
T -35°..+70°C, rH 0..100% Part No. 3087
T -35°..+110°C, rH 0..100% Part No. 3087-B

Special couplers



DB15 coupler, Start/Inpos Part No. 3032-IS
DB15 coupler, alarm reset Part No. 3032-EA
DB15 coupler; NTC Part No. 3032-A
Intermediate piece DB15-Lemo 3032-VN

Weather shield



Weather and radiation protection for humidity
sensor 3087 und 3088 Part No. 3087-W

HOTDOG

for extreme conditions



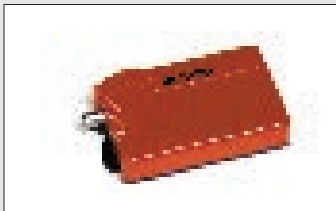
HOTDOG DT1 Part No. 2201
1x temperature internal -40°..+65°C, waterproof, welded housing

The HOTDOG family

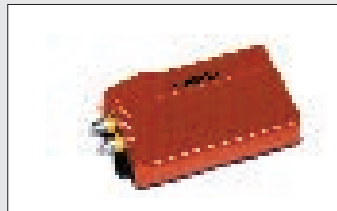
For recording temperature and humidity

HOTDOG dataloggers have stood the test of time and still provide the simplest solution for a wide variety of applications. Their modular design allows you to use them for specific and customized functions.

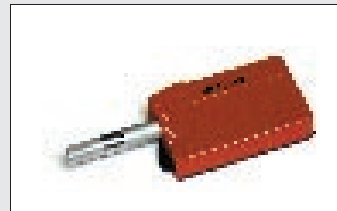
- Self-contained datalogger
- Memory capacity for 16,000 measured values
- Data store interval programmable between 2s..2h
- Washable
- Infra-red interface
- Practical accessories



HOTDOG DT2 Part No. 2202
1x NTC temperature -50°..+140°C, int. -40°..+65°C



HOTDOG DT3 Part No. 2203
2x NTC temperature -50°..+140°C



HOTDOG DH1 Part No. 2204
1x internal -40°..+65°C, 0..100% rel. humidity

Accessories HOTBOX



In-Position bracket Part No. 2802



Simple bracket Part No. 2816



PC interface incl. software Part No. 2302



All temperature probes, see page 5



HOTBOX HTH Part No. 2601
Accessories Set Part No. 2810-HT1: PC-data cable, NTC-temperature probe 3010-L03, socket 2611-B, case, elproLOG WIN software

Accessories: PC cable and optional NTC sensors

HOTBOX HTH humidity and temperature up to 105°C

Self-contained datalogger for high temperatures

Robust aluminum housing, memory capacity for 64,000 measured values

3 channels: internal 1x humidity and temperature, external 1x temperature

Ranges: 0%..100%rH, -35°C..+105°C (105°C up to 1 hour, 95°C long-time)



HOTBOX BKT4 Measurement range 1250°C
HOTBOX BKT4-L Measurement range 350°C

HOTBOX BKT4

Self-contained datalogger

Robust aluminum housing

Memory capacity for 16,000 measured values

4 channel datalogger for thermocouple type K

Temperature measurement range -80°..+1250°C

Part No. 2241-A
Part No. 2246-A



Accessories:
Isolation box up to 300°C Part No. 2809
Type K sensor 1.5 mm Part No. 3251-D1.5

Universal datalogger HOTBOX-SE

4 channels, 6 inputs

Freely programmable units of measure (e.g. pressure, CO₂, m/sec) memory capacity for 64,000 measured values, autoscroll display, sensor supplied by internal batteries 2x 9V = 18V, external sensor supply possible

- Fast PC evaluation
- Online display, user or hyper terminal
- Connection for protocol printer
- Alarm output via installed DC switch
- Universal sensor connection:
4 pins for 2x NTC temperature probes
5 pins for 2x 4-20mA signal input
7 pins for 2x DC signals and supply



HOTBOX-SE Part No. 2501
Accessory set: case, cable, software Part No. 2810-SE

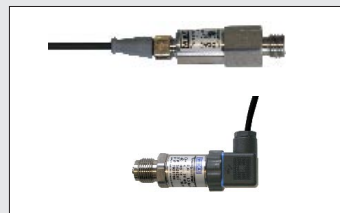
Accessories HOTBOX-SE



All temperature probes. see 5



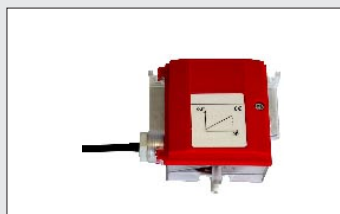
Connector for sensor connection
with 4 pin terminal (2x NTC) Part No. 2540-P4
with 5 pin terminal (2x 4..20mA) 2540-P5
with 7 pin terminal (2x DC) 2540-P7



Pressure sensor, stainless steel 4..20mA
-1..9 bar G 1/4" Part No. 3280-A
-1..24 bar G 1/4" Part No. 3280-B
Baro: 0.8..1.2 bar, G 1/2" Part No. 3255-A



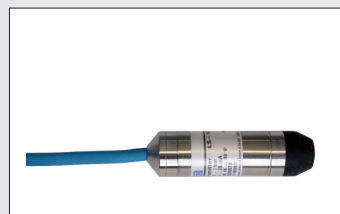
Air speed 0.3..20 m/s
Output DC 0..2 V Part No. 3264-C
Output 4..20mA Part No. 3264-D



Differential pressure sensor in clean rooms
-50..+50 Pa, 4..20mA Part No. 3260-L



Humidity and temperature
Hygroclip sensor TIRH, DC Part No. 3088-A
Hygroclip sensor TIRH 5 mm Part No. 3089-A
Extension incl. connector Part No. 3216-Lxx



Water level sensor with compensation
Level probe from 0..10 m, 4..20mA
Part No. 3263-C



AC current monitoring
Current clamp Mini2 1..150 A, Part No. 3268
Current clamp YCV5 2..500 A, Part No. 3269



CO₂ transmitter 0..2000 ppm
0..10V / 4..20mA Part No. 3271-F
for channel mounting Part No. 3271-G



CO gas transmitter 0..300 ppm
Output 4..20mA Part No. 3272-A



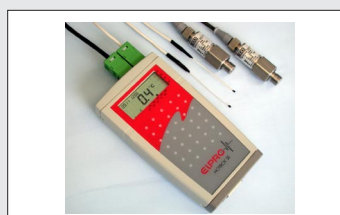
Density of light in dwellings
Light sensor Part No. 3295



Housing waterproof IP65 for
outdoor applications Part No. 2350-A



Application: clean room
1x differential pressure +/-50Pa Part No. 3260-L
1x humidity and temperature Part No. 3088-A
1x cable 1 meter Part No. 3216-L01
1x mounting plate Part No. 2804-SE1



Application: pressure at compressors
1x pressure sensor -1..9 bar Part No. 3280-A
1x pressure sensor -1..24 bar Part No. 3280-B
2x NTC probes -50..140°C Part No. 3055-L03



Application: recording climatic data
1x hygroclip sensor Part No. 3088-A
1x extension 1m Part No. 3216-L01
1x sensor for air speed Part No. 3264-D
1x NTC probe -50..140°C Part No. 3090-L10



Application: monitoring fresh air
1x sensor for air velocity Part No. 3264-D
1x current clamp Mini2 Part No. 3268
2x NTC probes -50..140°C Part No. 3090-L10

PROBES

measuring temperatures



NTC temperature probes

Resistor probes 3K3A1B
Temperature range -50°C .. $+140^{\circ}\text{C}$

	Part No.
	3090-Lxx
	3091-Lxx
	3095-Lxx
	3010-Lxx
	3021-Lxx
	3041-Lxx

	Part No.
	3050-Lxx
	3055-Lxx
	3060
	3093-Lxx
	3094-Lxx
	3025-L00

PT100 temperature probes

IEC751 / EN60751 resistor probes
Temperature range, type-dependent -200°C .. $+550^{\circ}\text{C}$

	Part No.
	3161-Lxx
	3163-Lxx
	3181-Lxx
	3165-Lxx
	3166-Lxx
	3172-Lxx
	3164-Lxx
	3167-Lxx
	3174-Lxx
	3162-Lxx
	3169-Lxx
	3173-Lxx
	3160
	3171-Lxx
	3159-Lxx
	3168-Lxx

xx...Length of cable in meters

Typ K (NiCr/Ni) thermocouples

EN 60584
Temperature range, type-dependent -60°C .. $+1250^{\circ}\text{C}$

	Part No.
	3251-D1.5
	3253-S1
	3253-A

Connectors

	Loose probe end xxxx-Lxx
	Lemo connector, mounted xxxx-Sxx
	DB15 connector incl. soldering of sensors, 3032-B
	DB15 coupler, self-assembly 3034

Accessories for temperature probes

3211-y	3211-Byy	3095-T
3204-Sxx NTC extension cable		
3205-Lxx PT100 ML-extension cable		
3254 Typ K extension cable		

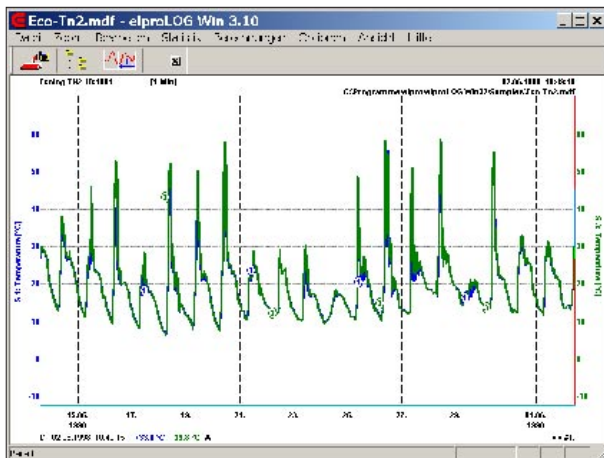
elproLOG WIN, the PC software for all ELPRO dataloggers

Simple, fast, reliable, plug & play

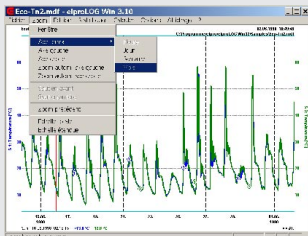
For all ELPRO dataloggers; capable of automatic adjustment to implemented model

Adaptable to your requirements.

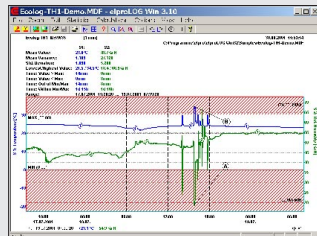
Simple procedure to create easily understandable and valuable documents.



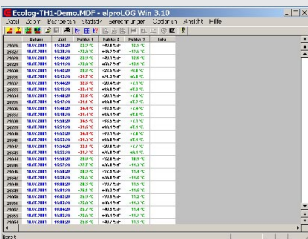
The choice is yours: simple overview or many details



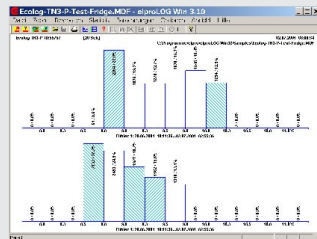
Clearly organized menu structure, Multilingual: German, English, French, Spanish, Italian



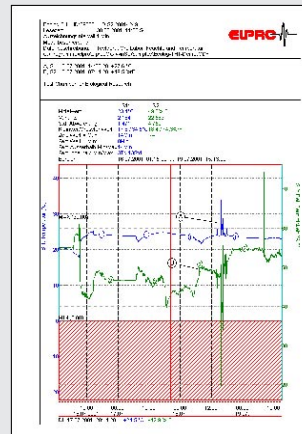
Threshold visualization and statistical calculations. Many additional functions for demanding users



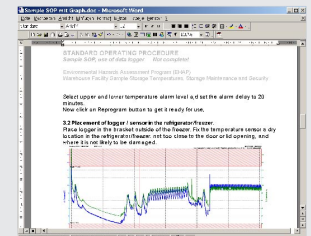
Data presentation in table form with color coding



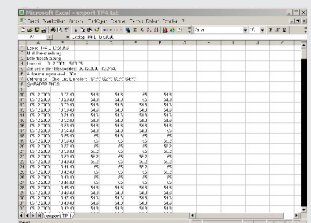
Histogram feature with manual or automatic classification



One mouse click for a convincing printout on all commercially available Windows printers



Simple copy / paste function to transfer graphics to Word or EXCEL



Convincing EXPORT functions enable date reduction for specific time domains

elproLOG WIN evaluation software functions

- Programming for all ELPRO dataloggers
- Data read-out from datalogger
- Printout of all screens with print preview
- Clearly laid-out graphs
- Clearly organized representation in table form
- Status printout with information about datalogger
- Statistical data
- Histogram representation
- Additional functions:
 - dew point, F-value, multicurves, free choice of colors, simultaneous presentation of separately recorded graphs, MKT (Mean Kinetik Temperature), Arrhenius calculation
- Zoom functions
- Possible to draw marking lines
- Own company logo on all documents
- Data and graph export
- Send e-mail: data file via e-mail to addressee

Security features:

- Software validation in accordance with ELPRO validation manual for 21 CFR 820
- Forgery and manipulation protection
- Coded logger to PC data communication
- Multipath transmission with check sums
- Compact coded data file
- Logger programming protection possible with pin code
- Complies to CFR 21 Part 11, Electronic Records

Network compatibility:

Standard: RS232, USB connection
 Can be installed and connected to network via LAN
 Operable with TCP/IP - RS module
 Depending on type: terminal protocol or telephone dial unit
elproLOG Software, Part No. 2338-CDV and 2338-CVU
 Runs on all Windows PCs:
 W95, W98, WNT, W2000, WXP
 Automatic installation from CD



ELPRO-BUCHS AG, Switzerland



Working with a panorama



Quality and Service:



ELPRO-BUCHS AG:

- ISO 9001 quality system
- Vendor audits, internal audits
- Expert systems

- Friendly company atmosphere
- Good employee training
- Good customer training
- Good work climate

- In-house production and development
- In-house calibration lab
- Modern resources
- Pleasant offices

- Datalogger service since 1989
- Calibration according to all standards
- Repair service for all products
- Customer calibration service
- World-wide distributors

You can return ELPRO units and the batteries for eco-friendly disposal.

Directives and Standards:

ISO 9001:2000	ELPRO SGS certificate no. 80013-1
ATEX	SNCH 01 ATEX 3280 / directive 94/9/EC
EX 1	Approval for EX protection zone 1; (EN 50014 and EN 5002)
CE	EN 50081-2 and EN 50082-2
EN12830 / EN92	Temperature recorder for transport, storage and distribution of foodstuffs
GZ1480	Exceptional approval for calibration
GZ1480/2000	from 10. 4. 2000, BEV, Austria

Integrated Regulations / Recommendations:

FDA	SW validation: 21 CFR 820, 21 CFR 11
GLP	FDA directive 21 CFR 58
GMP	21 CFR 210-211, drugs
	21 CFR 110, human food
FDA	Software validation for GLP applications
HACCP	Hazard Analisis Critical Control Points

measure, store, alarm, document

Distributor and Service:

Emobile-Tech, A division of SEEC:

Tel : 02-529-5549

Fax : 02-2606-1722

Homepage : www.emobile-tech.com