

(PLL1)

:

가

HP CASIO

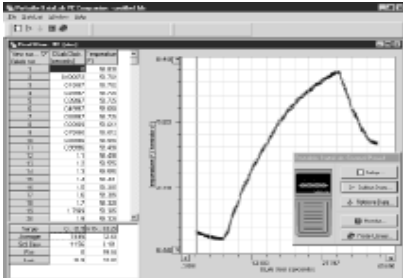
가



I/O

가

:



PC

PC

가

가

PC

가

(PLL)

PLL

PLL HP 가 HP 38G, HP 39G, HP 40G, HP 48G+/GX, and HP 49G series graphing calculators.

PPL , PC

PC

PLL (lux) (sound) 가 가

V

PLL

PLL 20,000 data(12)

PLL 56K baud 9

PLL

(Data Lab)

- : 3 analog 1 digital / 1 digital I/O / 1
(speed) sonic
- COM port : PC 9 56K baud
- : 20,000 data points per second
- : 34K data points 128K Flash memory, depending on application
- LUX SOUND
- :
-
-
- CMOS compatible digital I/O ports
- Analog input: 0-to-5 volt or +/- 10 volt to a 12-bit A/D converter
- : AA 4
- : AC adapter or 12 volts DC
- : 0° to 45° C, 90% (40° C)
- : 210 mm x 90 mm x 35 mm
- () : 326 g
- () : PLL , , ,
- 가
- PC (HP 38G, HP 39G, HP 40G HP 48G+/GX, and HP 49G calculators)
- 1 (.)